

Metro Invitational 2015

WKRC Info Sheet

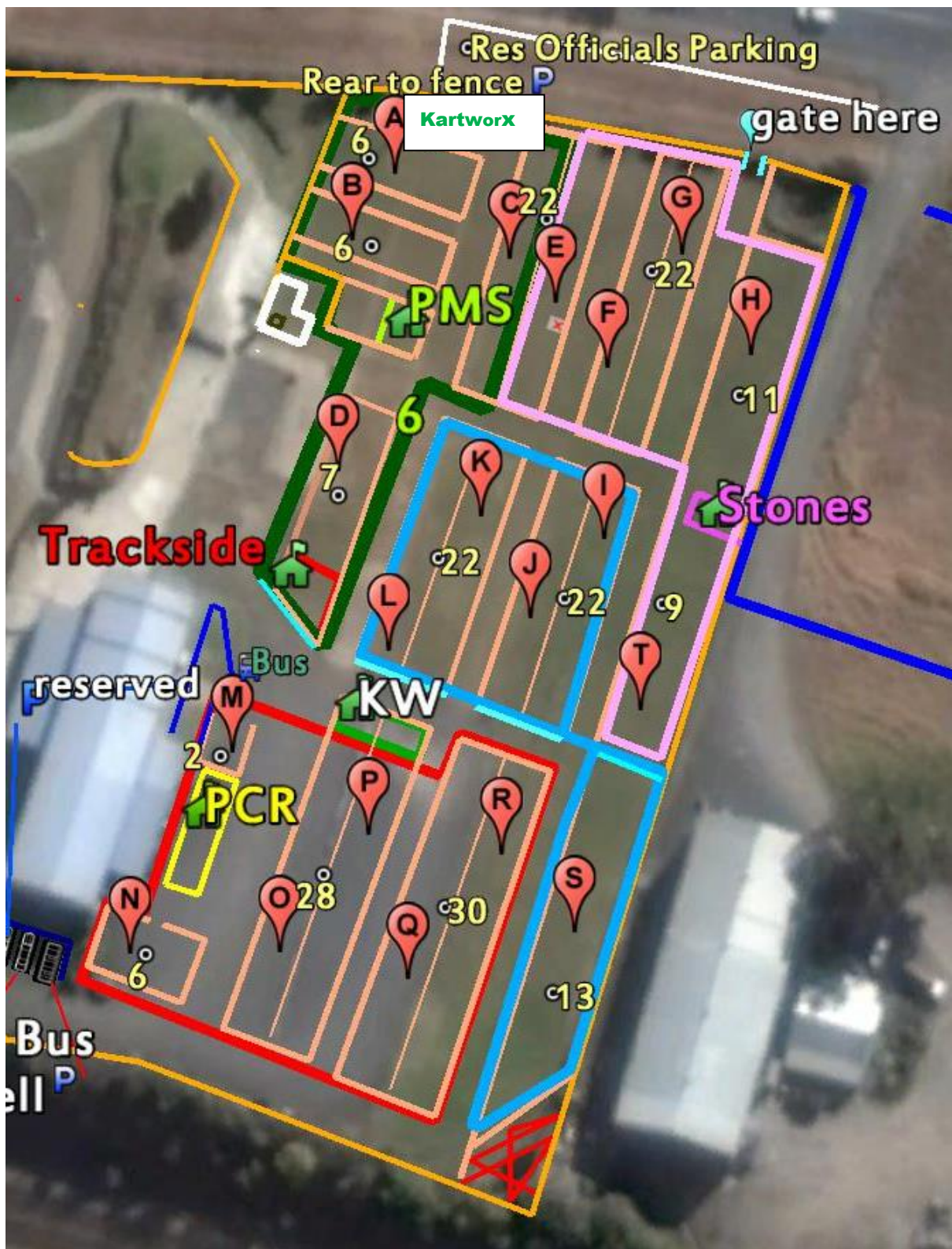
Parking

Parking at the Picton track is limited. Please read and follow the instructions below to allow easy access for all.

- No tow vehicles are to be parked on the site.
- There are two parking areas as shown on the attached diagrams: “Boral” & “Roadworks”
- A courtesy bus has been provided for transport to the “Boral” parking area over the railway line. Please use the bus as we have been allowed to use this site conditional on no pedestrians walking over the railway line and along the road.
- Access to the “Roadworks” parking area is via a gate in the north eastern corner of the pit area.
- There is to be no parking along the main access road from the main gate. This is to allow two way traffic flow in & out of the facility.
- There is to be no parking in front of the EMERGENCY ACCESS gate on the south western end of the circuit. This gate is the access for emergency services and will also be used to remove stricken karts from the circuit & thus speed up the race meeting.
- Parking on the outside of the northern fence is reserved for officials only.

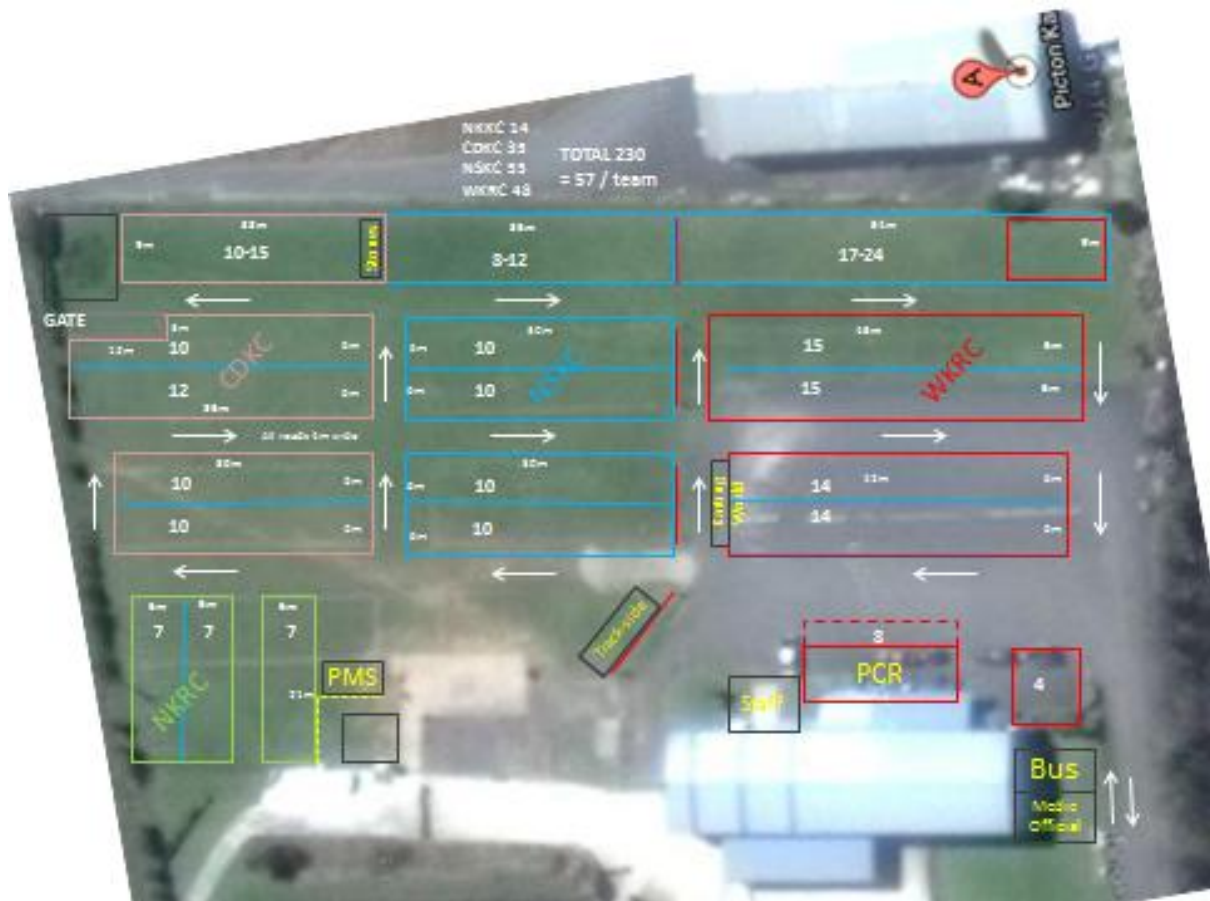


Pit Allocation



<u>Club</u>	<u>Allocated Areas</u>
NKRC (Green Zone)	A,B,C,D
CDKC (Pink Zone)	E,F,G,H,T
NSKC (Blue Zone)	I,J,K,L,S
WKRC (Red Zone)	M,N,O,P,Q,R

Traffic Flow Around Pits



Notes

BBQ for competitors will commence from 5.30pm as your last race for the day concludes.

If non-competitors wish they can purchase a ticket for the BBQ from the Race Secretary for \$10 before 3.00pm.

Tee Shirts should be worn to the Driver's Briefing as Team Photos will be taken immediately after.

Diagram is attached showing the flow in and around the Weigh Shed & Grid area. Please read & follow this as it will reduce congestion in this area.

There is to be no tyre or fuel dumping on the site.

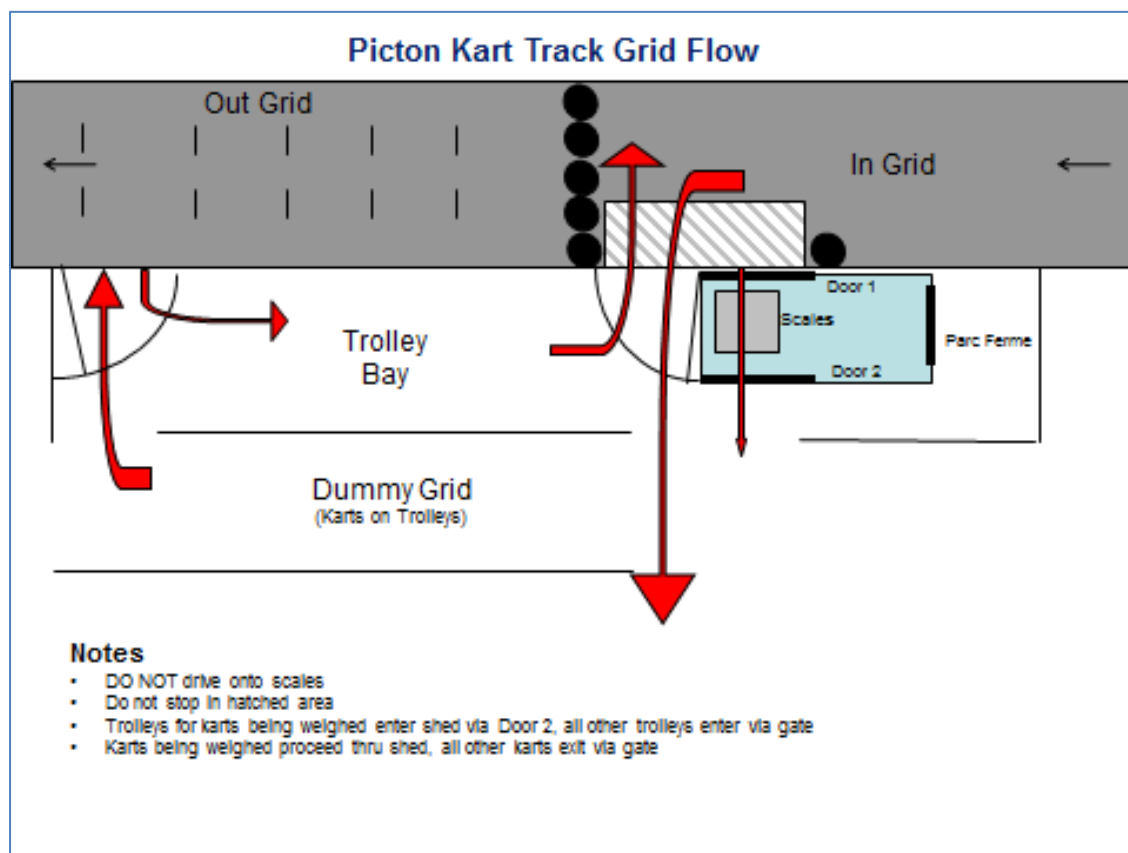
Access from the out grid to the spectator area is via the annex on the main building.

There will be a live timing screen in the canteen area.

There is to be no engine starting before 8.00am or after 6.00pm.

Additional toilets are available in the pit area.

Flow Around Grid Area



Timetable

Friday

- 12.00pm Gates Open
- Track will be used during the day for Picton Kart Track's monthly Social Day (This is not AKA practice)
- 4.00pm – 6.00pm Confirmation of entry, by completing a scrutineering form for each entry & placing in tray at the race secretary's office.
- 9.00pm Gates locked
- If you need to arrange access after gates locked phone Wayne Ruty 0423 200951 who will remain on site.

Saturday

- 6.00am Gates open
- 6.30am – 7.30am Confirmation of entry, by completing a scrutineering form for each entry & placing in tray at the race secretary's office.
- 8.00am Engines allowed to start
- 8.00am Practice commences in race order. There will be 2 practice sessions of 5 mins each per class.
- 8.30am Presidents/Club Captains to finalise teams (Stewards room)
- 9.00am Clubs to pick up dinner vouchers and Tee Shirts from Race Secretary's office.
- 11.00am practice ceases
- 11.15 Team Meetings
- 11.30 Official Opening & Driver's Briefing
- 12.00 Team Photos
- 12.30 Qualifying Commences
- 5.30 pm Free BBQ for competitors as their final race concludes.
- 8.00pm Gates locked
- If you need to arrange access after gates locked phone Wayne Ruty 0423 200951 who will remain on site.

Sunday

- 6.00am Gates Open
- 8.00am Engines allowed to start
- 8.00am Racing commences (Note there will be no Driver's Briefing or Warm Up session)
- Presentation will commence approximately 1 hr after racing is complete.

Race Order

1	Cadet 12	7	TAG 125 Light
2	Restricted 125 Heavy	8	Junior National Heavy
3	Junior National Light	9	TAG 125 Heavy
4	Clubman Heavy	10	Rest 125 Masters Light
5	Restricted 125 Light	11	Junior Max
6	Cadet 9	12	Senior National Heavy

If you have a clash with consecutive classes please contact the club via promotions@wkrc.com.au or advise the Race Secretary